


## BASS DRUM PENDANT 430 ASSEMBLY INSTRUCTIONS

 CALL COLIN ON 0429 349 128 IF YOU HAVE ANY QUERIES.

### 1. PARTS

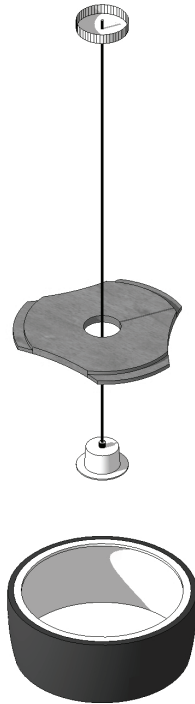
CANOPY

SUSPENSION CABLE/  
 ELECTRICAL FLEX

TIMBER HANGING  
 PLATE

CERAMIC LAMP  
 HOLDER CUP

CERAMIC DRUM



### 2. MOUNTING

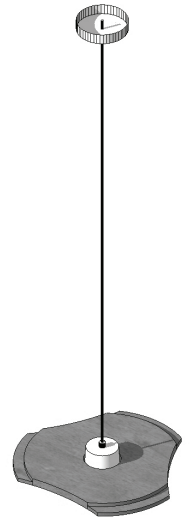
ESTABLISH PENDANT HANGING HEIGHT BY MEASURING FROM CEILING TO TOP OF TIMBER PLATE.

**DO NOT ATTEMPT TO MOUNT ASSEMBLY WITH CERAMIC DRUM ATTACHED.**

ATTACH CEILING MOUNT TO APPROVED FIXING POINT WITH MINIMUM 10KG HANGING CAPACITY.

ARRANGE FOR TEMPORARY SUPPORT OF TIMBER PLATE WHILE MAKING ALL NECESSARY ELECTRICAL/ CABLE CONNECTIONS.

ATTACH CEILING CANOPY AND TENSION STEEL WIRE CABLE WITH CABLE ADJUSTOR.



**ATTENTION: NO PART OF THE PENDANT ASSEMBLY MUST EVER BE ALLOWED TO HANG FROM THE ELECTRICAL FLEX. ALL ELECTRICAL CONNECTIONS MUST BE CARRIED OUT BY A LICENSED ELECTRICAL CONTRACTOR.**

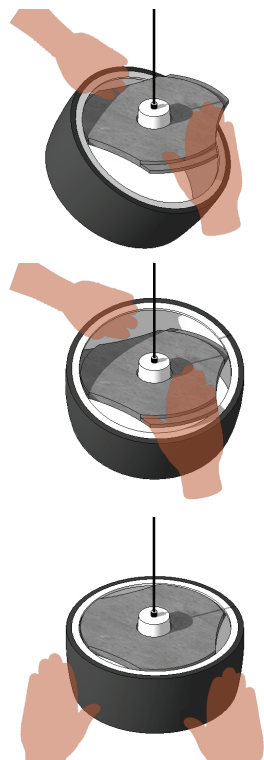
### 3. HANGING

AFTER TIMBER PLATE HAS BEEN INSTALLED -

A. HOLD THE BASE OF THE CERAMIC DRUM WITH ONE HAND AND GUIDE IN THE FIRST ARM OF THE TIMBER PLATE WITH THE OTHER HAND.

B. GUIDE IN THE SECOND ARM OF THE TIMBER PLATE.

C. LIFT THE CERAMIC DRUM OVER THE FINAL ARM OF THE TIMBER PLATE AND SET THE PENDANT DOWN TO REST FULLY ON THE REBATES ON EACH ARM OF THE TIMBER PLATE.



### 3. LEVELLING

ENSURE THAT THE CERAMIC DRUM IS SEATED EVENLY ON THE THREE REBATES OF THE TIMBER PLATE.

TO LEVEL THE PENDANT - SUPPORT THE TIMBER PLATE FROM THE UNDERSIDE WITH ONE HAND AND WITH THE OTHER HAND, SLIDE THE CERAMIC LAMP HOLDER CUP WITHIN THE CENTRE HOLE OF THE TIMBER PLATE AS REQUIRED.

